



HAMBURG

NORTHERN GERMANY

TRAVEL VIA
GRIMSBY or HULL
AND HAMBURG

BRITISH ROYAL MAIL ROUTE

NORTHERN GERMANY

GERMANY is a land of big things and has many attractions which can be realised easily and cheaply by taking advantage of the facilities offered in this folder by the direct route between Grimsby or Hull and Hamburg. There are two important considerations to bear in mind—a substantial reduction in the monthly return fares to people who are not resident in Germany, and improvements in the saloon accommodation on the steamers S.S. *Bury* and S.S. *Stockport*.

Hamburg is known the world over as a great port, and though it is largely a commercial city with its modern business establishments, it has much to offer the holiday-maker. Lying in the busiest quarter is the beautiful Alster Lake, alive with all kinds of pleasure craft; here are outdoor cafes where one can enjoy refreshment to the accompaniment of music for which Germany is renowned. Then there are the well-laid-out avenues and parks, botanical gardens, and on the outskirts, the great Hagenbeck Zoo; whilst the old part of the town, the museums, and other buildings, architecturally fine, have their particular attractions. The situation of Hamburg is ideal for visiting other parts of Germany.

On the North Sea Coast are many health resorts, most of them on small islands, among which is Heligoland. They are noted for bracing climate and sunshine.

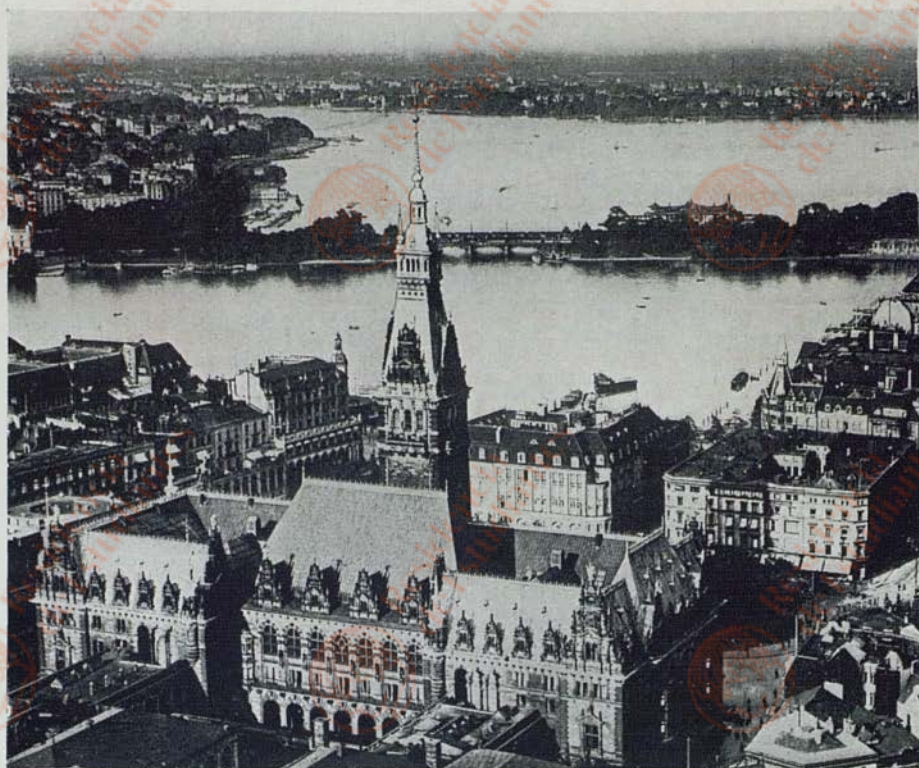
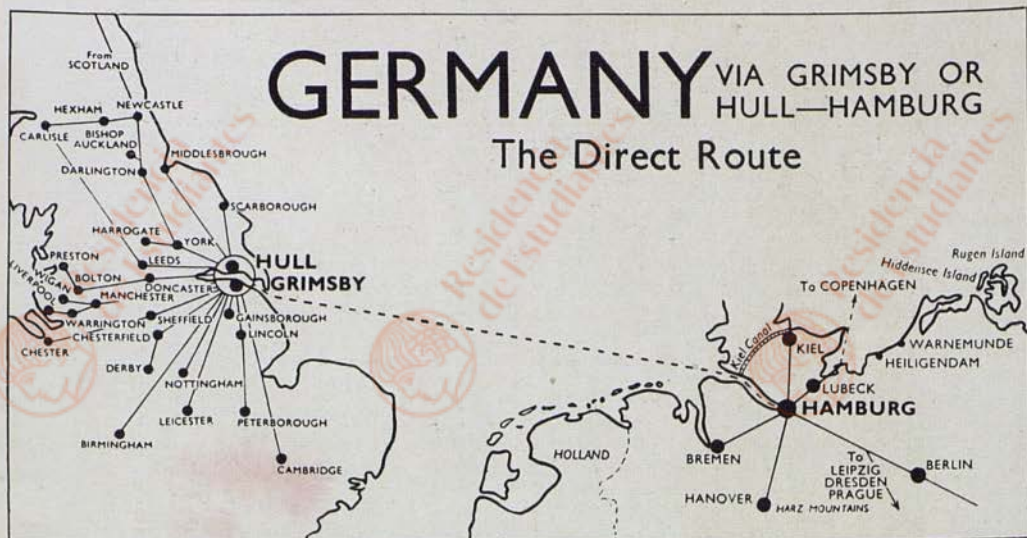
Along the Baltic seaboard there is a chain of delightful holiday resorts the most important of which are Kolberg, Warnemünde, Heiligendam and Brunshaupten. Extensive coniferous woods stretching down to the shores add to the charm of these popular resorts. The islands of Rügen, Hiddensee, Usedom and Wollin boast a number of bathing resorts which are very popular, among them being Swinemünde, the largest on the Baltic coast.

In a southerly direction are the Harz Mountains, an extensive range averaging 2,000 feet in height, the loftiest peak being The Brocken, nearly 4,000 feet, which can be ascended by mountain railway. The district is famous for health and pleasure, and the scenery is beautiful.

Berlin, with the diversified attractions of a great capital, 180 miles from Hamburg, can be reached by a morning's express train ride. There are the busy streets thronged with people, the great palaces, innumerable cafes, restaurants, cinemas, and theatres; the world-famous Unter den Linden, luxurious hotels, imposing business houses, the playground—Luna Park—and so one might go on.

But wherever you go in Germany there is just that difference which adds a note of distinction to your holiday.

Intending visitors to Copenhagen and certain other parts of Scandinavia will find the services via Grimsby or Hull and Hamburg very convenient and inexpensive.



HAMBURG

CUISINE

Special attention is paid to the catering on the steamers

The charges are as under

Official Tariff of Saloon Charges for Meals, etc. on Steamers

BREAKFAST

	s	d
Table d'hote, consisting of Cereals or Porridge, Fish, Bacon and Egg, or Cold Meat, Preserves, Tea, Coffee	3	0
Tea or Coffee, Bread and Butter and Preserves	1	3
" " " " " with two boiled eggs	2	0

LUNCHEON

Soup, Chop, Steak or Cold Meats, Potatoes, Salad or Pickles, Sweets and Cheese	3	0
--	---	---

AFTERNOON TEA

Tea, Bread and Butter, Preserves, Cake	1	0
---	---	---

DINNER

Table d'hote, consisting of Soup, Fish, Joint, Sweets and Cheese, Dessert	4	0
Small Menu	3	0

WINES etc (as per list)

IMPORTANT NOTICE—COUPONS FOR 5 MEALS

Passengers not resident in Germany supplying passport details may pay in advance for **five meals at an inclusive charge of 13s. 3d.** per single journey. Coupons must be obtained in advance from Associated Humber Lines, 101 George Street, Hull, or through principal stations and agencies.



DINING SALOON ON BOARD

SAILINGS

GRIMSBY AND HULL—HAMBURG

Royal Mail Route

From Hull (Riverside Quay)

Every Wednesday at 6.30 p.m.
Arrive Hamburg (Sandthor Quay)
Friday about 7.0 a.m.

From Grimsby Docks

Every Saturday about 7.0 p.m.
Arrive Hamburg (Sandthor Quay)
Monday about 7.0 a.m.

From Hamburg (Sandthor Quay)

Every Wednesday about 6.0† p.m.
Arrive GRIMSBY DOCKS Friday
about 7.0 a.m.

From Hamburg (Sandthor Quay)

Every Saturday about 6.0† p.m.
Arrive Hull (Riverside Quay)
Monday about 7.0 a.m.

Average Passage 30 hours †Mid-European time Passengers embark 5.0 p.m.

ORDINARY FARES Saloon Single £2 10 0 Steerage Single £1 12 6

CHEAP HOLIDAY FARES (Applicable all the year round)*

	Single	Return	Return
	£ s d	£ s d	£ s d
Saloon	*1 19 0	(Valid 90 days) *3 18 0	(Valid 1 month) *3 2 0
Steerage	*2 10 9	—

*These fares are calculated on a Travel Mark basis, and are liable to alteration or cancellation without notice. Tickets at these fares can only be issued to persons permanently resident outside Germany who must at the time of booking supply details of their passports.

THE FLEET

The Royal Mail Service between Grimsby and Hull—Hamburg is normally maintained by the S.S. *Stockport* and S.S. *Bury*. These vessels have been built to Lloyds' highest class, and are fitted with up-to-date conveniences and appliances for the comfort and safety of passengers. The cabins on the Promenade Deck have recently been modernised, new wash-hand basins with hot and cold running water have been installed, and reading lights fitted. The Main Deck accommodation has been entirely remodelled to provide three 4-berth and fourteen 2-berth cabins fitted in the same manner as those on the Promenade Deck. New lavatory accommodation has also been installed. Special facilities have been provided for handling motor cars promptly and safely. Electric light is fitted throughout, and the saloons and state-rooms are amidships.

60 PER CENT. REDUCTION FOR VISITORS TO GERMANY

No Stay in Germany Necessary

A 60 per cent. reduction on the 1st, 2nd, or 3rd Class fast train (D-Zug) fares is in force for visitors to Germany. FD—(unless booked in advance) and L—train supplements are payable in full. Tickets, which are valid for three months and allow of break of journey as often as desired, will be issued for all sections of the German State Railways, from any frontier station, and for any distance. They will be issued for

- (a) Return journeys to a German destination
- (b) Round journeys in Germany (circular tickets "Rundreisen")
- (c) Transit journeys through Germany.

Outward and return journey need not be via the same frontier station.

For further information and tickets apply principal tourist agencies
or ASSOCIATED HUMBER LINES 101 GEORGE STREET HULL





POTSDAMER PLATZ, BERLIN

CONVEYANCE BETWEEN HULL (Corporation Pier) AND GRIMSBY DOCKS

A passenger from Grimsby or Hull can, in conjunction with the steamer ticket, obtain a special ticket allowing free conveyance from Grimsby Docks to Hull (Corporation Pier) or *vice versa* (by the L.N.E.R. Ferry and Rail Service) on board the steamer, at the steamship and station booking offices at Hull (Paragon, Riverside Quay and Corporation Pier), at Grimsby Docks and Town, or on prior application to Associated Humber Lines, 101 George Street, Hull.

PARTIES

Special steamer and through fares are quoted by Associated Humber Lines 101 George Street, Hull, for

Parties of 10 or more persons.

Between Grimsby Docks or Hull and Hamburg, the fares are

For parties of 15 or more passengers travelling together

For parties of 10 to 14 passengers travelling together

Saloon Return
per passenger

54/6

58/6

The fares are liable to alteration or cancellation without notice. Tickets at these fares can only be issued to persons permanently resident outside Germany, who must at the time of booking supply details of their passports.

For parties of Boy Scouts, Girl Guides, Rovers, Rangers and similar Associations, exceptionally low fares are in operation.

RESERVATIONS OF BERTHS AND CABINS

The fare includes a berth as far as practicable, but the following are the charges per single passage, additional to the saloon fare, for certain cabins and berths—

	Per single passage
Cabin-de-Luxe (2 beds)	15/- per berth
Cabin-de-Luxe, exclusive use by one passenger	30/- per cabin
Promenade Deck (2-berth and 3-berth cabins)	5/- per berth
Promenade Deck, 2-berth cabin, exclusive use by one passenger	15/- per cabin
Promenade Deck, 3-berth cabin, exclusive use by one passenger	25/- per cabin
Promenade Deck, 3-berth cabin, exclusive use by two passengers	20/- per cabin
Main Deck (2-berth and 4-berth cabins)	No extra charge per berth. For exclusive use 10/- per un-occupied berth

For information, tickets, reservation of berths, apply

Associated Humber Lines, 101 George Street, Hull

Telegrams CONTINENTAL RAILWAY HULL

Telephone 34680

CHILDREN

Children under 14 years of age are charged half the steamer or through return fares between Stations in Great Britain and Hamburg, except that children under 3 years of age for whom separate accommodation is not required are conveyed free

INTERAVAILABILITY OF RETURN TICKETS

Return steamer tickets are interavailable for return to or from Grimsby Docks or Hull (Riverside Quay).



STOLBERG

CHEAP HOLIDAY TICKETS

VIA GRIMSBY DOCKS OR HULL (RIVERSIDE QUAY)

Available One Month
from L.N.E.R. and L.M.S. Stations

TO HAMBURG

Every Wednesday via Hull and every Saturday via Grimsby Docks

Issued all the year round

AVAILABILITY

The tickets are available for return by any sailing from Hamburg (Sandthor Quay) to either Grimsby Docks or Hull, and thence to station of origin by any recognised railway route, provided the journey is completed within one calendar month from date of issue.

PASSPORTS AND VISAS ESSENTIAL

The steamer proportion of these fares is calculated on a Travel Mark basis. The fares are liable to alteration or cancellation without notice. Tickets at these fares can only be issued to persons permanently resident outside Germany who must at the time of booking supply details of their passports.

FROM	Return Fare 3rd Class Rail 1st Class Steamer	FROM	Return Fare 3rd Class Rail 1st Class Steamer
*Aberdeen (L.N.E.R) ...	£ 5 8 2	*Grimsby† ...	£ 5 8 2
Ashton ...	3 16 8	*Halifax (L.M.S) ...	3 14 1
*Barnsley (Court House) ...	3 12 0	*" (Old and North Bridge)	
(L.M.S) ‡ ...	3 12 0	(L.N.E.R) ...	3 14 1
Batley (L.N.E.R) ‡ ...	3 12 3	*Harrogate ...	3 12 6
(L.M.S) ‡ ...	3 12 3	*Huddersfield (L.M.S) ...	3 13 7
Belfast, via Heysham† ...	6 3 1	*Hull‡ ...	3 2 0
Berwick ...	4 15 10	Ilkley ...	3 14 1
Birkdale (L.M.S) ...	4 3 9	Keighley (L.N.E.R) ...	3 14 4
*Birmingham (L.M.S) ...	4 5 1	(L.M.S) ‡ ...	3 14 4
*Blackburn (L.M.S) ...	3 19 7	*King's Lynn ...	3 17 9
Blackpool (North) ...	4 4 7	Kirkcaldy ...	5 8 9
(Central) ...	4 4 7	*Leeds (Central or City) ...	3 11 2
*Blyth ...	4 6 8	*Leicester (Central) ...	4 0 1
*Bolton (L.M.S) ...	3 19 7	(L.M.S) ‡ ...	4 0 1
*Boston ...	3 10 8	*Lincoln (L.N.E.R) ...	3 10 2
*Bradford (Exchange) ...	3 13 0	*Liverpool (Exchange) (L.M.S) ...	4 3 6
(Forster Square) ‡ ...	3 13 0	(Central) (C.L.C) ...	4 3 6
Bridlington ...	3 7 6	*London (King's Cross or Maryle-	
*Burnley (Manchester Road) ...	3 17 6	bone) ...	4 9 4
Bury (L.M.S) ...	3 18 6	*Loughborough (Central) ...	3 18 10
*Cambridge (L.N.E.R) ...	4 1 11	(L.M.S) ‡ ...	3 18 10
*Carlisle (L.M.S) ...	4 10 7	Macclesfield (L.N.E.R) ...	3 19 7
*" (L.N.E.R) ...	4 10 7	(L.M.S) ‡ ...	3 19 7
Castleford (L.N.E.R) ...	3 10 2	*Manchester (Central or London	
(L.M.S) ‡ ...	3 10 2	Road) ...	3 18 0
*Chester (L.M.S) ...	4 4 1	*" (Victoria) ‡ ...	3 18 0
*" (Northgate) (C.L.C) ...	4 4 1	*Mansfield (L.N.E.R) ...	3 14 1
*Chesterfield (Central) ...	3 14 4	Melrose ...	4 19 10
(L.M.S) ‡ ...	3 14 4	*Middlesbrough ...	3 18 6
*Darlington (Bank Top) ...	3 17 3	Morley (L.N.E.R) ...	3 12 0
*Derby (Friargate) ...	3 18 3	(L.M.S) ‡ ...	3 12 0
(L.M.S) ...	3 18 3	*Newark ...	3 12 9
*Dewsbury (L.N.E.R) ...	3 12 6	*Newcastle (Central) ...	4 4 1
(L.M.S) ‡ ...	3 12 6	Northallerton ...	3 14 7
*Doncaster (Central) ...	3 9 4	*North Shields ...	4 5 4
Dublin, via Holyhead† ...	6 8 5	*Norwich (Thorpe) ...	4 5 8
*Dundee (Tay Bridge) ...	5 15 7	*Nottingham (Victoria) ...	3 15 11
*Durham ...	4 1 2	*Oldham (Clegg Street) ...	
*Edinburgh (L.M.S) ...	5 6 4	(Werneth) ‡ ...	
(L.N.E.R) ...	5 6 4	(Central) ‡ ...	3 16 5
*Gainsborough (Central) ...	3 8 4	(Mumps) ‡ ...	
*Glasgow (L.M.S) ...	5 6 11	*Perth (L.N.E.R) ...	5 15 7
(L.N.E.R) ...	5 6 11	*Peterborough (North) ...	3 16 2
*Goole ...	3 6 2	*Preston (L.M.S) ...	4 1 5
*Grantham ...	3 14 4	Redcar ...	3 19 10

FROM	Return Fare 3rd Class Rail 1st Class Steamer	FROM	Return Fare 3rd Class Rail 1st Class Steamer
	£ s d		£ s d
*Retford	3 10 5	*Stalybridge (L M S) ‡	3 16 8
Ripon	3 14 7	*Stirling (L-N-E-R) ...	5 9 9
*Rochdale (L M S) ...	3 17 9	*Stockport (L M S) ...	3 18 0
Rotherham (L M S) ‡	3 11 5	*" (Tiviot Dale) (C L C)	3 17 9
*Rotherham and Masborough	4 4 4	*Stockton	4 2 6
*Rugby (Central) ...	5 15 0	*Sunderland	5 8 6
*St. Andrews	4 1 8	Swansea (Victoria) ...	3 16 2
St. Helens (Central) ...	3 11 5	*Todmorden (L M S) ...	4 3 6
" (L M S)	3 7 0	*Tyne Dock	4 5 8
*Scarborough (Central)	3 7 6	Tynemouth	
Scunthorpe and Frodingham	3 12 6	*Wakefield (Westgate) (L-N-E-R)	} 3 11 2
Selby	3 12 6	*" (Kirkgate) (L-N-E-R) ‡	
*Sheffield (Victoria) ...	3 13 0	*" (Kirkgate) (L M S) ‡	
" (L M S) ‡	3 9 7	*Warrington (Central) (C L C)	4 0 11
Shipley (L M S)	3 13 7	" (L M S)	4 0 11
*Skegness	4 3 9	*West Hartlepool	3 19 10
*Sleaford	4 3 9	Whitby	3 15 2
*Southport (Chapel St.) (L M S)	4 3 9	*Wigan (Central) (L-N-E-R)	4 1 2
" (Lord Street) (C L C)	4 3 9	" (L M S)	3 11 5
*South Shields	3 14 4	*Workop	3 9 7
Sowerby Bridge (L M S) ...	3 13 3	*York	
*Spalding			

Conveyance across Hull between Paragon Station and Riverside Quay is not included in these fares.

† Saturdays direct steamer; Wednesdays via Hull.

‡ Saloon on steamer between Ireland and England.

§ In connection with sailings from Hull only.

|| Wednesdays from Riverside Quay; Saturdays from Corporation Pier via Grimsby.

The tickets are obtainable at the stations marked * from Associated Humber Lines, 101 George Street, Hull, or from the principal Tourist Agencies. Associated Humber Lines, 101 George Street, Hull, quote fares and supply tickets from other L-N-E-R and L M S Stations. Passengers are advised to give as much prior notice as possible.

GENERAL INFORMATION

INTERPRETERS

Interpreters in uniform are in attendance at Grimsby and Hamburg at the arrival and departure of the steamers to render passengers any assistance they may require.

BOAT TRAIN AT HULL

During the period 19th June to 20th September 1939 inclusive, a boat train will run between Paragon Station and the Riverside Quay, connecting with the departure and arrival of the Hamburg steamers as under—

WEDNESDAYS

HULL (Paragon) dep. 5.40 p.m.

HULL (Riverside Quay) arr. 5.52 p.m.

MONDAYS

HULL (Riverside Quay) dep. 7.45 a.m.*

HULL (Paragon) arr. 7.57 a.m.

*Or as soon as possible after completion of Passport and Customs formalities.

HAMBURG (SANDTHOR QUAY)—Shed No. 3

There are through trains from Hamburg to all important stations in Germany, and connecting services to all parts of Europe. The steamers are berthed at SANDTHOR QUAY, which is about 1½ miles from the Hauptbahnhof; the journey from Quay to Station may be made either by tram or by taxi. The tram fare to the Hauptbahnhof (Central Station) is 15 pfennige and 15 pfennige for each article of baggage. The cost of a taxi from Sandthor Quay to the Hauptbahnhof (including waiting time at the Customs) is 2.50 R.M. or 3 R.M. with baggage, or about 1.50 R.M. without baggage. Passengers travelling via Grimsby or Hull and Hamburg will find the Hauptbahnhof the most convenient Station in Hamburg for joining trains for any destination.

The offices of the Port Agents, Messrs H. C. Röver, G.m.b.H., 7/9 Holzbrücke, are situated within close proximity to Sandthor Quay.



GÖHREN—ISLE OF RÜGEN



HEILIGENDAM

ARRIVAL AT HAMBURG

The steamers are due to arrive in Hamburg on the second morning following the departure from Grimsby or Hull, and passengers may remain on board until 9.0 a.m. Disembarkation commences at 7.0 a.m.

BRITISH CONSUL

The address of the British Consul in Hamburg is Spadenteich 8. III.

TRAVEL MARKS

The attention of passengers proceeding to Germany is drawn to the arrangements which now exist whereby Tourists (who are not resident in Germany) are able to make use of "Travel Marks", which are obtainable through the principal Banks and Tourist Agencies. "Travel Marks" bought in Great Britain at the cheaper rate have precisely the same value in Germany as the Reichsmark, and consequently enable a considerable saving to be effected in hotel, etc. expenses.

ARRIVAL OF STEAMERS AT GRIMSBY DOCKS AND HULL

The steamer leaving Hamburg on Wednesdays is due to arrive at Grimsby Docks Friday morning. Immigration formalities (i.e. examination of passports, Customs examination, etc.) take place about 7.0 a.m., but passengers may, if they so desire, remain on board the steamer until 9.0 a.m. Saloon passengers are conveyed free of charge from the steamers to Grimsby Docks Station.

The steamer leaving Hamburg on Saturdays is due to arrive at Hull (Riverside Quay) on Monday morning. Immigration formalities (i.e. examination of passports, Customs examination, etc.) take place about 7.0 a.m. Paragon Station, whence all trains depart, is about 20 minutes' walk from the steamer's berth. Taxis are obtainable at reasonable charges.

ENQUIRIES

For further particulars of the Humber Continental Services to and from Hamburg you are invited to apply to

Associated Humber Lines, 101 George Street, Hull

Principal LMS and L.N.E. Stations, or principal tourist agencies

where berths may be reserved and tickets obtained. Application can also be made to certain important Railway Enquiry Offices.



AGENTS IN GERMANY

H. C. Röver, G.m.b.H., 7/9 Holzbrücke, Hamburg. Mitteleuropäisches, Reisebüro (M.E.R.), Berlin, and Branches.

ASSOCIATED HUMBER LINES

comprising—Goole Steam Shipping (LMS Railway), Goole; L.N.E.R. Continental Services, Grimsby and Hull; Hull & Netherlands Steam Ship Co. Ltd, Hull; Wilson's & North Eastern Railway Shipping Co. Ltd, Hull