



BUA
FILE NUMBER: 310117

RELEASED: MAY 10, 1945

JAP OBITUARY: PART THREE

Plunging from the sky like a meteor, a Jap plane gets a watery grave following a close but unseccessful attempt to bomb a carrier somewhere in the Pacific. At the left is the Navy flattop which had the close shave. Her outline is veiled in smoke as her anti-aircraft batteries continue to blaze at the stricken plane.

(See file numbers: 310115 and 310116)

WATCH YOUR CREDIT

"OFFICIAL U. S. NAVY PHOTOGRAPH"

The Navy Department has no objection to the use of this photograph in commercial advertisements, provided copy and layout are submitted for review prior to publication to the REVIEW SECTION, OFFICE OF PUBLIC RELATIONS, NAVY DEPARTMENT, WASHINGTON, D. C., or to a District Public Relations Office. However, it has no power to waive the privacy rights of the personnel portrayed.

ACME NEWSPICTURES, Inc.
441 EIGHTH AVE.
NEW YORK CITY
Please Credit "Acme Photo"
THE PICTURE IS LOANED TO YOU FOR YOUR
PUBLICATION ONLY AND MUST NOT BE LOANED
REPRODUCED OR USED FOR ADVERTISING PURPOSES
WITHOUT WRITTEN PERMISSION FROM US



FILE NUMBER: 310115

RELEASED: MAY 10, 1945

JAP OBITUARY: PART ONE

Roaring in to the attack, a Jap bomber drops his missiles near the stern of a first-line Navy aircraft carrier somewhere in the Pacific. Puffs of black smoke dot the sky overhead as the gunners aboard the threatened flat-top and other ships of the Task Force draw a bead on the raider.

(See File numbers: 310116 and 310117)

ACME NEWSPICTURES, INC.
NEW YORK CITY
461 EIGHTH AVE.

Please Credit "Acme Photo"
THIS PICTURE IS SOLD TO YOU FOR YOUR
PUBLICATION ONLY AND MUST NOT BE LOANED,
SYNDICATED OR USED FOR ADVERTISING PURPOSES
WITHOUT WRITTEN PERMISSION FROM US.

WATCH YOUR
"OFFICIAL U.S. NAVY PHOTOGRAPH"

The Navy Department has no objection to the use of this photograph in commercial advertisements, provided copy and layout are submitted for review prior to publication to the REVIEW SECTION, OFFICE OF PUBLIC RELATIONS, NAVY DEPARTMENT, WASHINGTON, D. C., or to a District Public Relations Office. However, it has no power to waive the privacy rights of the personnel portrayed.

BUAer 310115



FILE NUMBER: TR-12842

RELEASED: May 10, 1945

GUNNERS STAND BY TO REPEL ENEMY AIR ATTACK-Fully attired in flash proof gear, faces covered by masks, arms with gloves, gun crews of a forty millimeter quadruple mount on an aircraft carrier search the sky for Jap aircraft known to be in the vicinity, intent on attacking a U.S. Navy task force. In the background, its lines diffused by the brightness of the sea, is a SOUTH DAKOTA class battleship.

ACME NEWSPICTURES, Inc.
401 EIGHTH AVE.
NEW YORK CITY
Please Credit "Acme Photo"
THIS PICTURE IS SOLD TO YOU FOR YOUR
PUBLICATION ONLY AND MUST NOT BE LOANED
OR ADVERTISING PURPOSES
NO REPRODUCTION OR TRANSMISSION FROM IT

WATCH YOUR CREDIT

OFFICIAL U. S. NAVY PHOTOGRAPH

The Navy Department has no objection to the use of this photograph in commercial advertisements, provided copy and layout are submitted for review prior to publication to the PUBLIC AFFAIRS SECTION, OFFICE OF PUBLIC RELATIONS, NAVY DEPARTMENT, WASHINGTON, D. C., or to a District Public Relations Office. However, it has no power to waive the privacy rights of the personnel portrayed.



FILE NUMBER: 310116

RELEASED: MAY 10, 1945

JAP OBITUARY: PART TWO

Seconds after his bomb narrowly missed the target, the Jap's plane explodes as anti-aircraft shells find their mark. Trailing smoke, the flaming bomber noses over and heads for the Pacific.

(See file numbers: 310115 and 310117)

ACME NEWSPICTURES, Inc.
NEW YORK CITY
401 EIGHTH AVE.
Please Credit "Acme Photo"
THIS PICTURE IS SOLD TO YOU FOR YOUR
PUBLICATION ONLY AND MUST NOT BE LOANED,
SYNDICATED OR USED FOR ADVERTISING PURPOSES
WITHOUT WRITTEN PERMISSION FROM US.

WATCH YOUR CREDIT

"OFFICIAL U.S. NAVY PHOTOGRAPH"

The Navy Department has no objection to the use of this photograph in commercial advertisements, provided copy and layout are submitted for review prior to publication to the REVIEW SECTION, OFFICE OF PUBLIC RELATIONS, NAVY DEPARTMENT, WASHINGTON, D.C., or to a District Public Relations Office. However, it has no power to waive the privacy rights of the personnel portrayed.

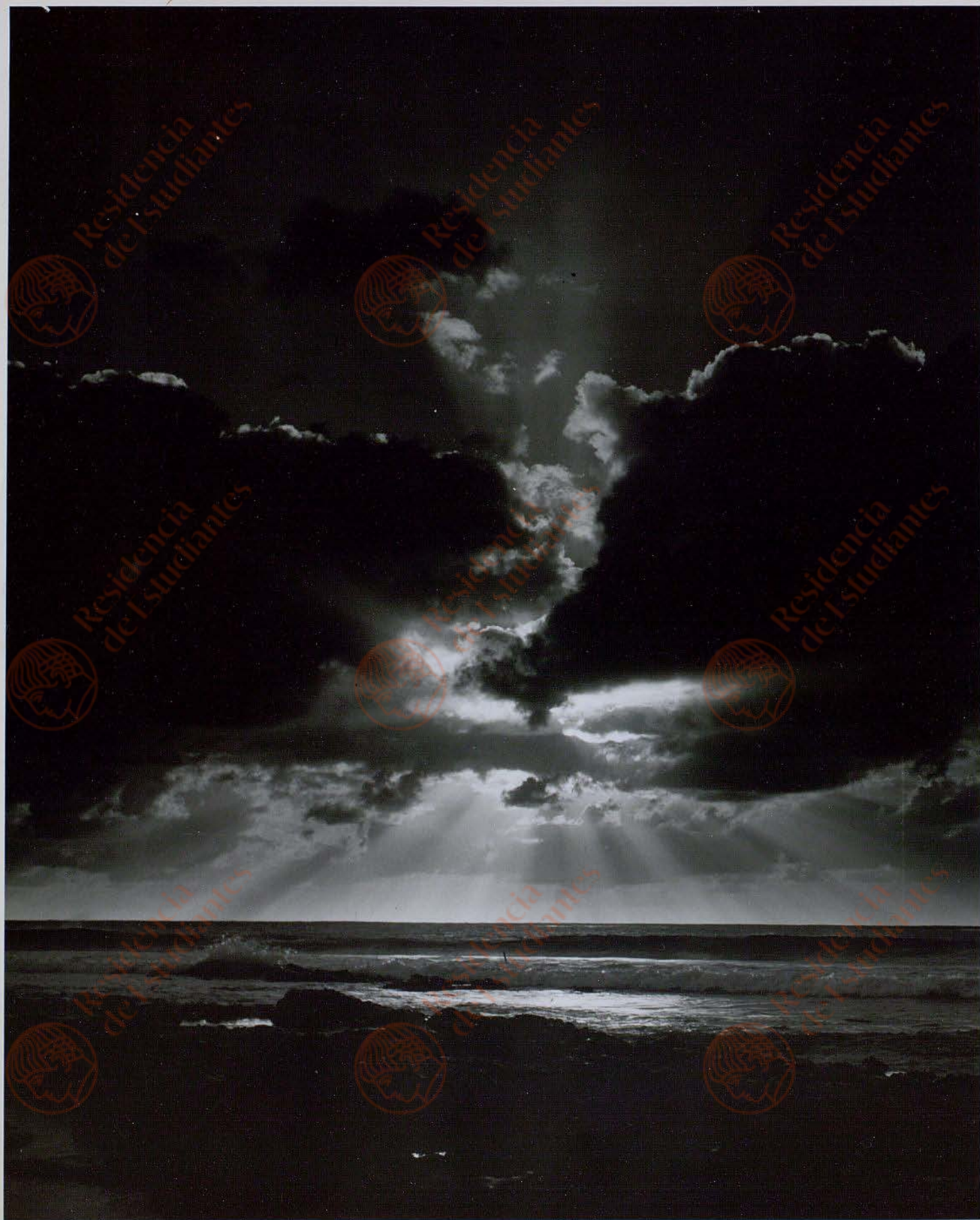


PUSHING ON-----In deployed order the Leathernecks of Major General Pedro Del Valle's First Marine Division advance over a hill against the Japanese forces constricted in the southern part of the island. The men near the crest keep low to avoid outlining themselves against the skyline. Each Marine keeps his trigger finger ready and a wary eye searching for any signs of the enemy.

Hdqutrs. No. 120,412.
DIST LIST 2-4
S-45

WATCH YOUR CREDIT LINE
OFFICIAL U. S. MARINE CORPS PHOTO
By Pfc. John T. Smith

ACME NEWS PICTURES, INC.
NEW YORK CITY
Please credit "Acme photo"
THIS PICTURE SOLD TO YOU FOR YOUR
PUBLICATION ONLY AND MUST NOT BE LOANED
WITHOUT WRITTEN PERMISSION FROM US.



FROM: PUBLIC RELATIONS DIVISION
U.S. COAST GUARD
WASHINGTON, D.C.

OFFICIAL COAST GUARD PHOTO

NEW DAWN OVER THE PACIFIC

TO AMERICAN FIGHTING MEN, THE PACIFIC SUNRISE IS MORE THAN A SIGHT OF TRANSCENDENT BEAUTY. FROM A BEACH ONCE BLOODY WITH BATTLE, A COAST GUARD COMBAT PHOTOGRAPHER SAW THE SUN RISING BEHIND A SCREEN OF CLOUDS AND CASTING ITS RAYS ON THE EVERLASTING, RESTLESS SURF ROLLING IN UPON THE SAND. IT REPRESENTED THE DAWN RISING WITH VICTORIES OF AMERICAN ARMS AND THE PROMISE OF A NEW DAY AFTER THREE YEARS OF DARKNESS UNDER JAPANESE TYRANNY.

IN REWRITING CAPTION PLEASE MENTION "COAST GUARD."

RELEASED FOR PUBLICATION

MAY 11 1945

U.S. COAST GUARD
WASHINGTON, D.C.

4212

81 EIGHTH AVE.
Coast Credit

ACME NEWSPICTURES, Inc.
NEW YORK CITY
THIS PICTURE IS SOLD TO YOU FOR YOUR PUBLICATION ONLY AND MUST NOT BE LOANED OR REPRODUCED FOR ADVERTISING PURPOSES WITHOUT PERMISSION FROM



OKINAWA TRAIL--- Strung out in a long line, Marines trudge along a dirt road on Okinawa. Spotty resistance on the part of the Japanese garrison has enabled the Leathernecks to reach the northern tip of the island, while in the south the enemy is staging a fight to the finish.

Hdqrs. No. 117,053
DIST LIST 2-4
4-2045

WATCH YOUR CREDIT LINE
OFFICIAL U.S. MARINE CORPS PHOTO
By Corporal Milton A. Ford.

ACME NEWSPICTURES, INC.

681 EIGHTH AVE. NEW YORK CITY

Please credit "Acme Photo"

THIS PICTURE IS SOLD TO YOU FOR YOUR
PUBLICATION ONLY AND MUST NOT BE LOANED
SYNDICATED OR USED FOR ADVERTISING PURPOSES
WITHOUT WRITTEN PERMISSION FROM US



PLASMA ON THE MOVE-----Even as the stretcher bearers start off the line on Okinawa with the wounded Marine, the reliable Navy Corpsman is on hand to administer blood plasma after attending to the injured arm of the man. The Corpsman injects the needle into the hurt Leatherneck's good arm while the left rear bearer holds aloft the bottle of life saving plasma.

Hdqtrs. No. 120,413.
DIST LIST 2-4
5-1145

WATCH YOUR CREDIT LINE
OFFICIAL U.S. MARINE CORPS PHOTO
By PFC James W. DeLoach



H0447

SIG. C. PHOTO 4-19-45 FRESH INFANTRY TROOPS JUST OFF SHIPS WHICH BROUGHT THEM TO OKINAWA ENROUTE TO THE FRONT LINES TO RELIEVE BATTLE WEARY TROOPS WHICH HAVE BEEN IN THICK OF IT SINCE D-DAY. SIG. CORPS RADIO-TELEPHOTO FROM HAWAII

NO. 329





761513. NEW YORK BUREAU

PAINTING UP

GUAM -- PFC W.C. KENNEDY, USMC, OF MT. DORA, FLA., APPLIES THE FINISHING TOUCHES TO HIS MAKE-UP JOB ON PFC RICHARD H. PATTON, USMC, OF ST. LOUIS, MO., WHO IS COSTUMED FOR HIS ROLE IN THE CHORUS OF A SHOW RECENTLY PRESENTED ON GUAM. THE PERFORMANCE WAS THE FIRST TO BE GIVEN IN THE NEW TURNAGE THEATRE AT CINCPAC HEADQUARTERS. THE THEATRE IS NAMED FOR MAJ. GEN. A.H. TURNAGE, FORMER COMMANDING GENERAL OF THE THIRD MARINE DIVISION.

BU REG 80

6/1/45

(PK)

CREDIT LINE (U.S. NAVY PHOTO FROM AGIE)



ACME TELEPHOTO

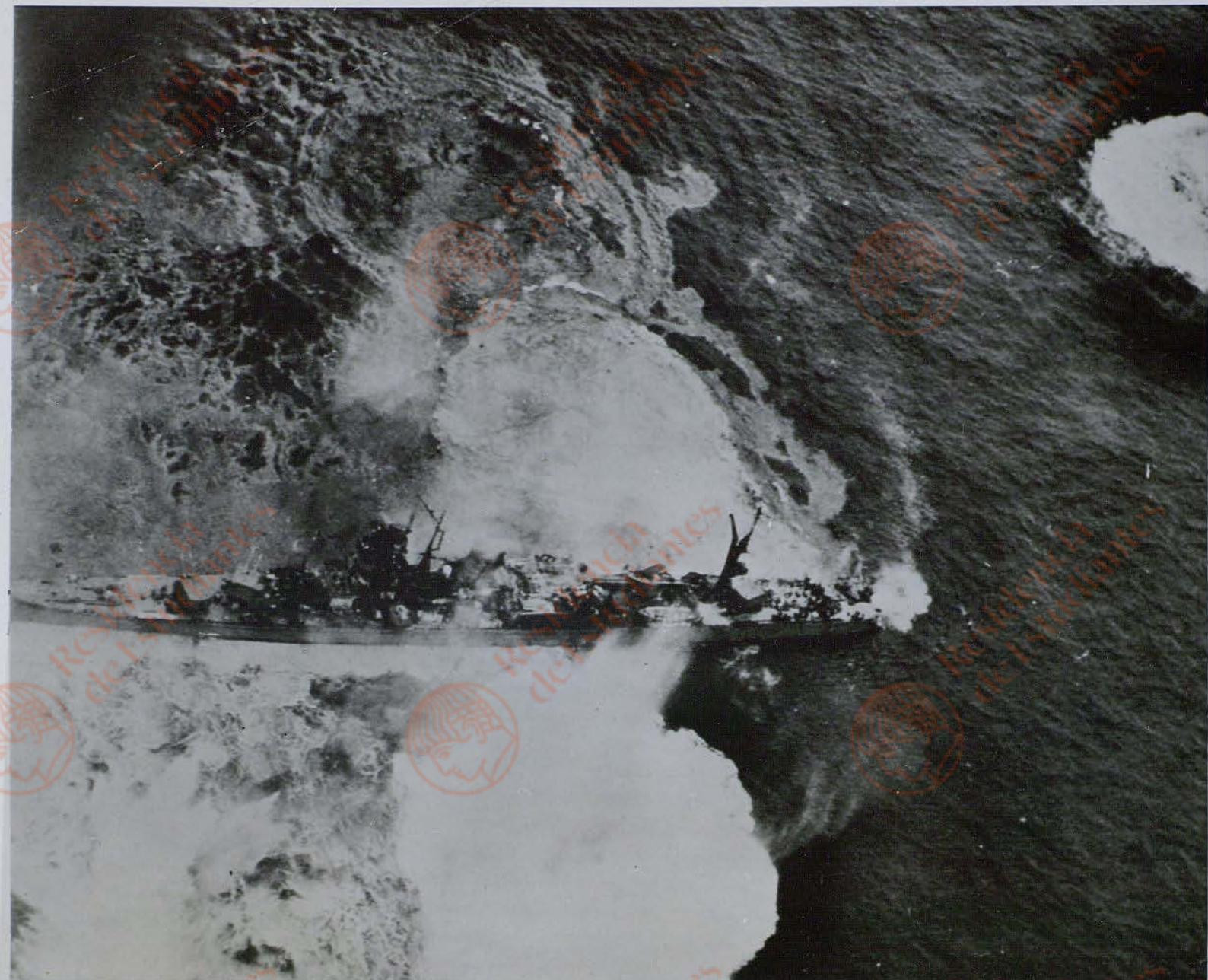
NEW YORK BUREAU

ACME TELEPHOTO

MARINES CHEER AS THEY GO INTO BATTLE

WASHINGTON, D. C. - Herded atop a tank, Marine infantrymen head for the town of Guga on Okinawa to take over before the Japs get the same idea.

Credit: Marine Corps photo from Acme Telephoto re
4/20/45



757831 NEW YORK BUREAU

DIRECT HIT ON JAPANESE CRUISER
 PACIFIC - A DIRECT HIT BURSTS ON THE
 FLEET CARRIER-BASED BRIGHT CRUISER OF THE
 FANTAIL OF A JAPANESE TO THE FINAL, FATAL
 AGANO CLASS, JUST PRIOR THE CRAFT IN THE
 TORPEDO PLANE ATTACKED MILES SOUTHWEST OF
 EAST CHINA SEA ABOVE STRADDLING THE HELP-
 KYUSHU. NEAR MISSE ENGAGEMENT IN WHICH
 LESS VESSEL DURING WAS SUNK.

ESHIR

ES

4/25/45

(EO)

PHOTO FROM ACME



757844 WP

757844 NEW YORK BUREAU

BATTLESHIP MANEUVERS TO AVOID BOMBING
 PACIFIC OCEAN - MANEUVERING EVASIVELY AT 15
 TO 20 KNOTS, THE YAMATO, 40,000 TON JAPANESE
 BATTLESHIP, ATTEMPTS TO EVADE ONCOMING BOMBS
 AND TORPEDOES FROM ATTACKING PACIFIC FLEET
 CARRIER PLANES IN THE EAST CHINA SEA SOUTHWEST
 OF KYUSHU. DURING THE COURSE OF THE BATTLE
 PLANES SANK THE YAMATO, TWO CRUISERS AND
 THREE DESTROYERS.

NY CHI

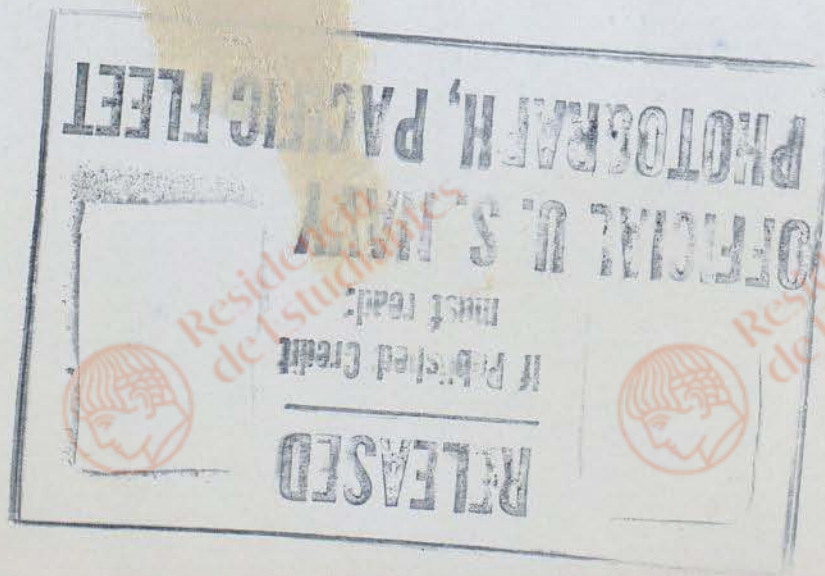
4/25/45

(EO)

CREDIT (OFFICIAL US NAVY PHOTO FROM ACME)

Jibune

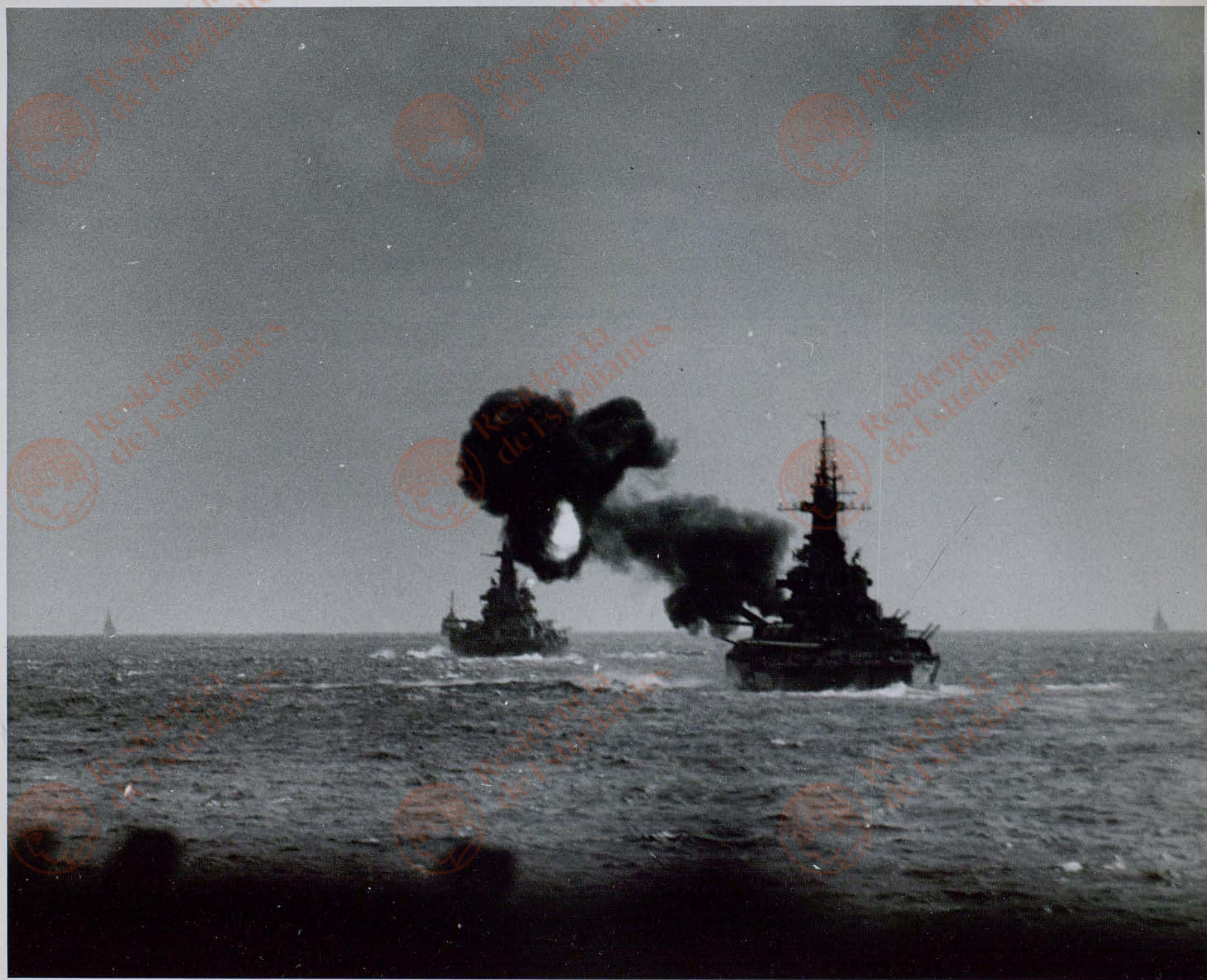
ACME NEWSPICTURES, INC.
401 EIGHTH AVE.
NEW YORK CITY
REPRINTED FROM "ACME PHOTO"
THIS PICTURE IS SOLD TO YOU FOR YOUR
PUBLICATION ONLY AND MUST NOT BE LOANED
SYNDICATED OR USED IN ADVERTISING
WITHOUT WRITTEN PERMISSION FROM ACME
NEWSPICTURES, INC.





SF 757816 NEW YORK BUREAU

JAP WARSHIP POUNDED
PACIFIC OCEAN - THE JAPANESE BATTLESHIP
YAMATO, 40,000-TON WARSHIP, FLEES FROM BOMBS
AND TORPEDOES OF ATTACKING U.S. PACIFIC
FLEET CARRIER PLANES. FIRES CAN BE SEEN
AMIDSHIPS AND A NEAR MISS EXPLODES OFF PORT
BOW. DURING THE ENGAGEMENT THE SHIP WAS SUNK
ALONG WITH TWO CRUISERS AND THREE DESTROYERS.
NY #14 T-MGS MUR FOR 4/25/45 (EO)
CREDIT LINE (OFFICIAL NAVY PHOTO FROM ACME)



FILE NUMBER: 313008

RELEASED: Apr 11 26, 1945

'BB' THROWS K.O. PUNCH--Heavy guns of a Navy battleship emit smoke and flame as they throw a 'knockout punch' at distant targets on Okinawa, supporting the advance of American soldiers across the Jap base.

WATCH YOUR CREDIT

OFFICIAL U.S. NAVY PHOTOGRAPH

The Navy Department has no objection to the use of this photograph in commercial advertisements, provided copy and layout are submitted for review prior to publication to the REVIEW SECTION, OFFICE OF PUBLIC RELATIONS, NAVY DEPARTMENT, WASHINGTON, D.C., or to a District Public Relations Office. However, it has no power to waive the privacy rights of the personnel portrayed.

592



W 761578. NEW YORK BUREAU

WINGING OVER OKINAWA FRONT LINES
 OKINAWA--MARINE SPOTTER PLANE FLIES OVER
 SHELL-POCKED STILL SMOKING BATTLEFIELD ON
 OKINAWA. THE PLANE, ON AN ARTILLERY CONTROL
 MISSION, SEES BATTLEFIELD AS TESTIMONY TO
 ACCURACY OF LEATHERNECK ARTILLERY AND MORTAR
 FIRE AND EFFECTIVENESS OF FLAMETHROWERS ON
 ENEMY STRONG POINTS.

#1 70 SPEC (RM)
 CREDIT (MARINE CORPS PHOTO FROM ACME) 6-1-45



FROM:

PUBLIC RELATIONS DIVISION
U.S. COAST GUARD
WASHINGTON, D.C.

OFFICIAL COAST GUARD PHOTO

THE LONG JOURNEY HOME

LIBERATED FROM JAP PRISON CAMPS IN THE PHILIPPINES, AMERICAN AND BRITISH INTERNEES CLIMB THE GANGWAY TO BOARD THE COAST GUARD-MANNED TUGBOAT TRANSPORT WHICH WILL CARRY THEM ACROSS THE PACIFIC TO THE UNITED STATES. HUNDREDS OF MEN, WOMEN AND CHILDREN, WHO FOR THREE LONG YEARS SUFFERED FROM SLOW STARVATION IN LOS BANON AND SANTO TOMAS PRISON CAMPS, MADE THE LONG JOURNEY TO CALIFORNIA AFTER WEEKS OF HOSPITALIZATION AND CONVALESCENCE UNDER PROTECTION OF AMERICAN FORCES OCCUPYING THE MANILA AREA.

RELEASED FOR PUBLICATION

MAY 11 1945

U.S. COAST GUARD
WASHINGTON, D.C.



FILE NUMBER: 313006

RELEASED: April 26, 1945

JAP 'OSCAR' HEADS FOR THE DEPTHS---Riddled by anti-aircraft fire from this Navy ESSEX-class carrier and its escorting destroyer, a Jap OSCAR noses over and plummets toward the Pacific after loosing a bomb off Kyushu during a carrier strike at the Jap homeland. The bomb, which is dimly discernible halfway between the falling plane and the ship, fell on one side of the intended target, while the OSCAR plunged into the waves on the other.

WATCH YOUR CREDIT

"OFFICIAL U.S. NAVY PHOTOGRAPH"

The Navy Department has no objection to the use of this photograph in commercial advertisements, provided copy and layout are submitted for review prior to publication to the NEWS SECTION, OFFICE OF PUBLIC RELATIONS, NAVY DEPARTMENT, WASHINGTON, D.C., or to a District Public Relations Office. However, it has no power to waive the privacy rights of the personnel portrayed.

ACME NEWSPICURES, INC.
15 EIGHTH AVE.
NEW YORK CITY
Please Credit "Acme Photo"
THIS PICTURE IS SOLD TO YOU FOR YOUR
PUBLICATION ONLY AND MUST NOT BE LOANED,
REPRODUCED OR USED FOR ADVERTISING PURPOSES
WITHOUT WRITTEN PERMISSION FROM US.



FILE NUMBER: 313007

RELEASED: April 26, 1945

CARRIER TILTS AS IT BANKS TO ESCAPE JAP RAIDER--Tipping slightly as it veers sharply to starboard to escape the bombs of an attacking Jap plane, this ESSEX-class carrier reveals its after flight deck to be loaded with Curtiss HELLDIVERS. Seconds after the photograph was taken the would-be 'killer' was shot down in mid-air. The action occurred off Kyushu during a carrier strike at the Jap homeland.

WATCH YOUR CREDIT

"OFFICIAL U.S. NAVY PHOTOGRAPH"

The Navy Department has no objection to the use of this photograph in commercial advertisements, provided copy and layout are submitted for review prior to publication to the REVIEW SECTION, OFFICE OF PUBLIC RELATIONS, NAVY DEPARTMENT, WASHINGTON, D.C., or to a District Public Relations Office. However, it has no power to waive the privacy rights of the personnel portrayed.

APR 27 1945
NEW YORK CITY
Please Credit "APC Photo"
THIS PICTURE IS LOANED TO YOU FOR YOUR
PUBLICATION ONLY AND MUST NOT BE LOANED,
REPRODUCED OR USED FOR ADVERTISING PURPOSES
WITHOUT WRITTEN PERMISSION FROM US



FILE NUMBER: 311870

RELEASED: April 25, 1945

ANTI-AIRCRAFT BARRAGE LIGHTS EVENING SKY--Myriads of tracers fly across the darkened sky and black bursts from heavy caliber guns hang over a U.S. Navy anchorage in the Western Pacific as ships throw up a barrage to repel attacking Jap planes, April 7, 1945.

WATCH YOUR CREDIT

"OFFICIAL U.S. NAVY PHOTOGRAPH"

The Navy Department has no objection to the use of this photograph in commercial advertisements, provided copy and layout are submitted for review prior to publication to the REVIEW SECTION, OFFICE OF PUBLIC RELATIONS, NAVY DEPARTMENT, WASHINGTON, D.C., or to a District Public Relations Office. However, it has no power to waive the privacy rights of the personnel portrayed.

ACME NEWSPICURES, INC.
401 EIGHTH AVE.
NEW YORK CITY
Please Credit "Acme Photo"
THIS PICTURE IS SOLD TO YOU FOR YOUR
PUBLICATION ONLY AND MUST NOT BE LOANED
REPRODUCED OR USED FOR ADVERTISING PURPOSES
WITHOUT WRITTEN PERMISSION FROM US.



4438

FROM PUBLIC RELATIONS DIVISION
U.S. COAST GUARD
WASHINGTON, D.C.

OFFICIAL COAST GUARD INFO TO

JAP PLANES SHOT DOWN IN ATTACK ON OKINAWA INVASION FLEET

BLASTED FROM THE SKY, TWO JAPANESE AIRPLANES GIVE UP THE BLACK SMOKE OF THEIR DEATH AGONIES IN THE MIDST OF THE AMERICAN INVASION FLEET WHICH THEY ATTACKED OFF OKINAWA. THE ENEMY AIR ATTACKS, COMING WITH FANATICAL FURY A FEW DAYS AFTER THE OKINAWA BEACHHEAD WAS SECURED, COST THE JAPS MANY AIRPLANES AS COAST GUARD-MANNED AND NAVY SHIPS FILLED THE SKY WITH BURSTING METAL FROM ANTI-AIRCRAFT GUNS.

IN RE-ITING CAPTION PLEASE MENTION "COAST GUARD."

THIS PICTURE IS SOLD TO YOU FOR YOUR PUBLICATION ONLY AND MUST NOT BE LOANED OR USED FOR ADVERTISING PURPOSES WITHOUT WRITTEN PERMISSION FROM THE
ACME NEWSPICTURES, INC.
401 EIGHTH AVE.
NEW YORK CITY 11
Please Credit "Acme Photo"

APR 26 1945

U.S. COAST GUARD
WASHINGTON, D.C.

592



ACME NEWSPICTURES, Inc.
35 EIGHTH AVE.
NEW YORK CITY
Please Print "Acme" in to
THIS IS SOLD TO YOU FOR YOUR
PUBLICATIONS AND MUST NOT BE LOANED
SYNDICATED OR REPRODUCED FOR ADVERTISING PURPOSES
WITHOUT WRITTEN PERMISSION FROM US.

FILE NUMBER: 314670

RELEASED: JUNE 1, 1945

BATTLESHIP SHARPENS HER FANGS -- An unusual aerial view of one of the Pacific Fleet's mighty battleships, the USS TENNESSEE, showing the mass of guns of different sizes which can be trained on the defenses of the Japanese.

WATCH YOUR CREDIT

"OFFICIAL U.S. NAVY PHOTOGRAPH"

The Navy Department has no objection to the use of this photograph in commercial advertisements, provided copy and layout are submitted for review prior to publication to the REVIEW SECTION, OFFICE OF PUBLIC RELATIONS, NAVY DEPARTMENT, WASHINGTON, D.C., or to a District Public Relations Office. However, it has no power to waive the privacy rights of the personnel portrayed.



FILE NUMBER: TR-13240

RELEASED: June 1, 1945

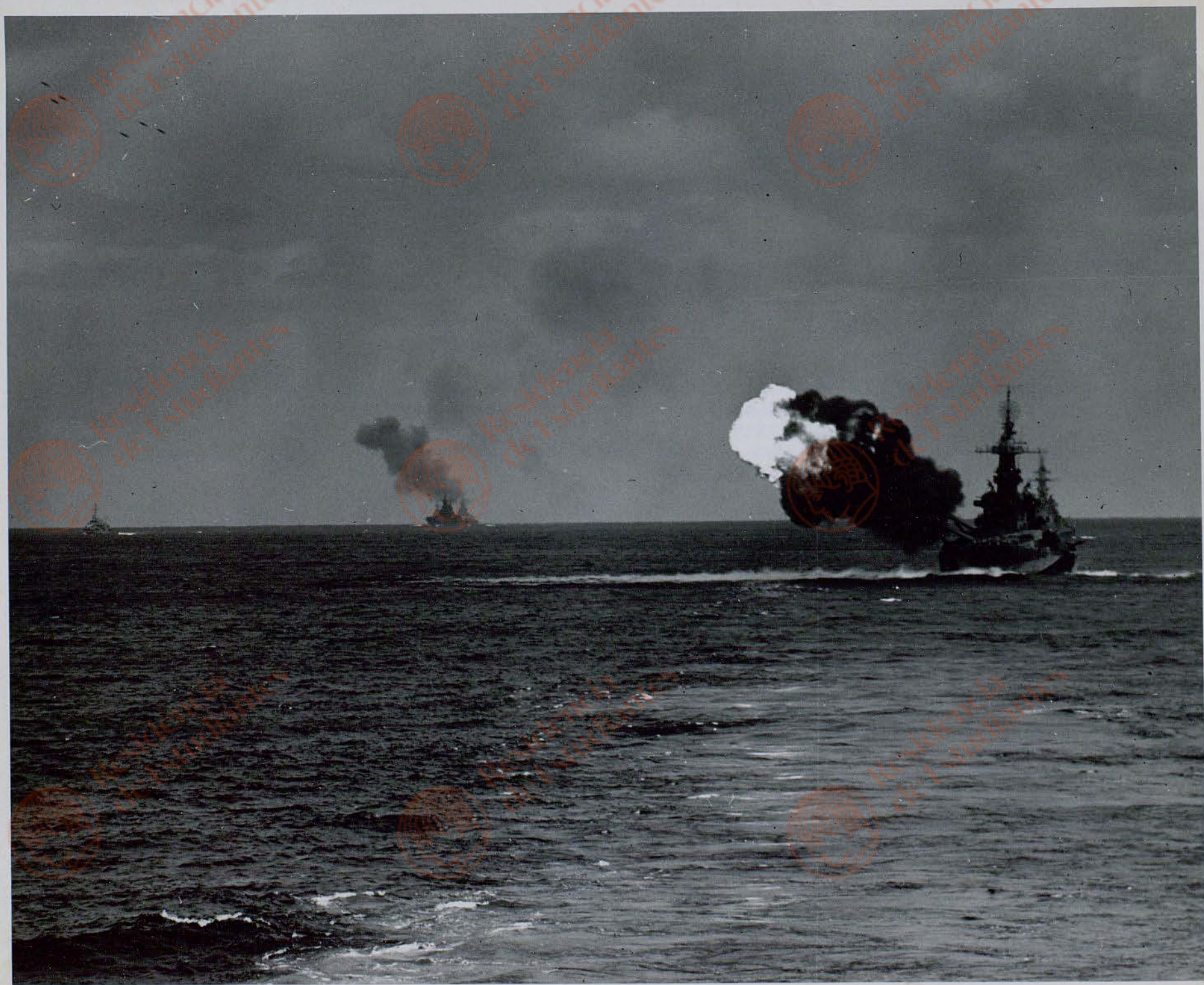
CAMERA CAPTURES BEAUTY OF HARSH SUBJECT—Blending the lights and shadows of sky, land, and sea a U.S. Navy photographer's camera depicts exotic beauty in an otherwise unglamorous subject...a coral pit on Saipan.

WATCH YOUR CREDIT

"OFFICIAL U.S. NAVY PHOTOGRAPH"

The Navy Department has no objection to the use of this photograph in commercial advertisements, provided copy and layout are submitted for review prior to publication to the REVIEW SECTION, OFFICE OF PUBLIC RELATIONS, NAVY DEPARTMENT, WASHINGTON, D.C., or to a District Public Relations Office. However, it has no power to waive the privacy rights of the personnel portrayed.

ACME NEWSPICTURES, INC.
NEW YORK CITY
181 EIGHTH AVE.
PR Photo Credit "Acme Photo"
THIS PHOTO IS SOLD TO YOU FOR YOUR PUBLICATION ONLY AND MUST NOT BE LOANED SYNDICATED OR USED FOR ADVERTISING PURPOSES WITHOUT WRITTEN PERMISSION FROM US



FILE NUMBER: 313009

RELEASED: April 26, 1945

BATTLESHIP'S SHELLS IN MID-AIR—Caught by the camera as they soared through the sky en route to distant targets on Okinawa, the 16-inch projectiles hurled by the Navy battleship at the right resemble a flight of planes against the dark gray sky. Behind them, jets of vari-colored smoke mark their starting place.

WATCH YOUR CREDIT

OFFICIAL U.S. NAVY PHOTOGRAPH

The Navy Department has no objection to the use of this photograph in commercial advertisements, provided copy and layout are submitted for review prior to publication to the REVIEW SECTION, OFFICE OF PUBLIC RELATIONS, NAVY DEPARTMENT, WASHINGTON, D.C., or to a District Public Relations Office. However, it has no power to waive the privacy rights of the personnel portrayed.

ACME NEWSPICTURES, Inc.
300 EIGHTH AVE.
NEW YORK CITY
Please Credit "Acme Photo"
THIS PHOTOGRAPH IS SOLD TO YOU FOR YOUR
PUBLICATION ONLY AND MUST NOT BE LOANED
REPRODUCED OR USED FOR ADVERTISING PURPOSES
WITHOUT WRITTEN PERMISSION FROM US



FILE NUMBER: 308273

RELEASED: April 25, 1945

TASK FORCE IN 'LINE OF DUTY'—Ships of a Navy Task Force are snapped in the Pacific as they move in to port following a war mission. Air craft carriers are in the majority among the ships pictured--the silhouetted segment of a ship at the right being part of the flat-top from which the photograph was taken.

WATCH YOUR CREDIT

"OFFICIAL U.S. NAVY PHOTOGRAPH"

The Navy Department has no objection to the use of this photograph in commercial advertisements, provided copy and layout are submitted for review prior to publication to the REVIEW SECTION, OFFICE OF PUBLIC RELATIONS, NAVY DEPARTMENT, WASHINGTON, D.C., or to a District Public Relations Office. However, it has no power to waive the privacy rights of the personnel portrayed.

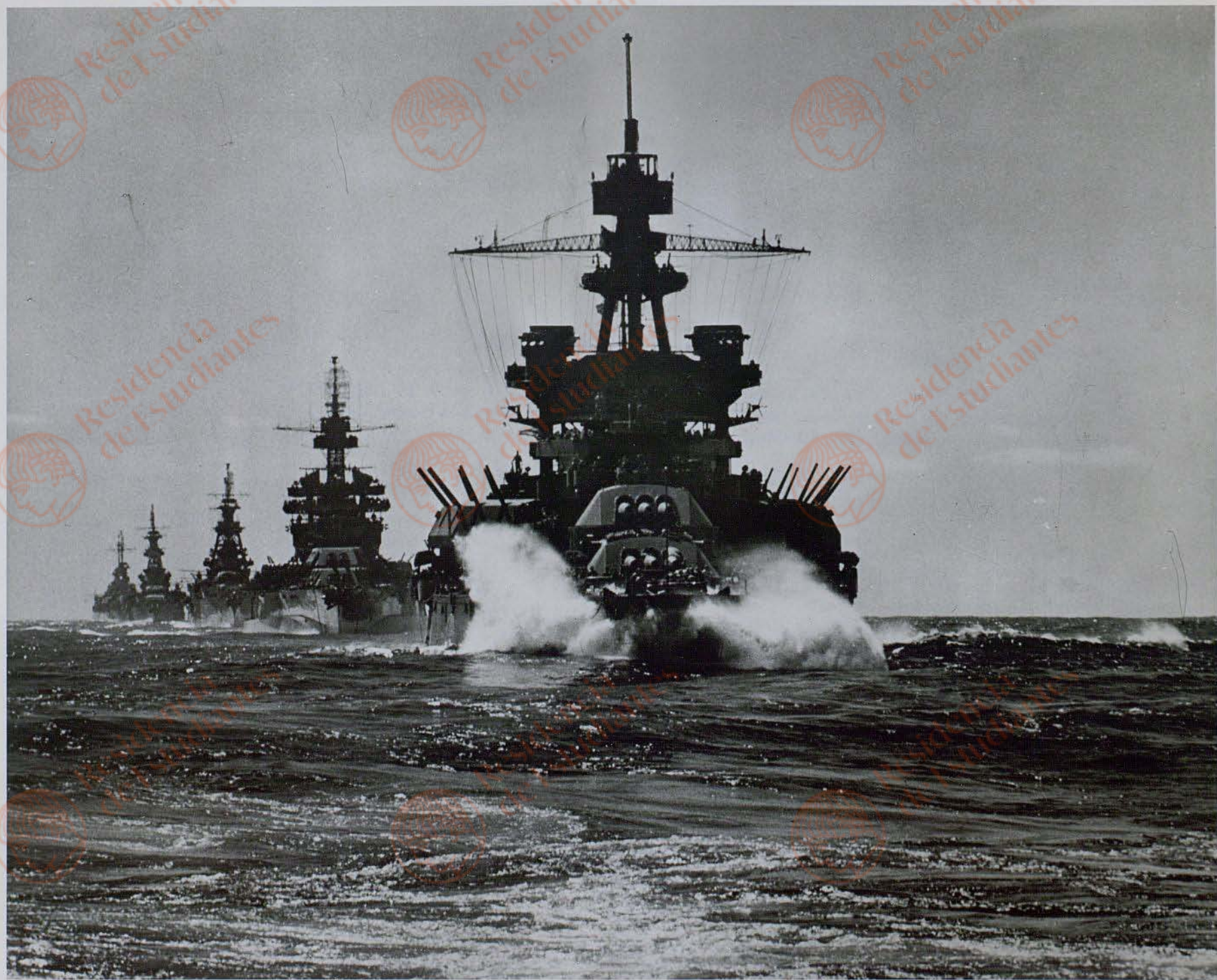
ACME NEWSPICTURES, Inc.
481 EIGHTH AVE.
NEW YORK CITY
Please Credit "Acme Photo"
THIS PICTURE IS SOLD TO YOU FOR YOUR
PUBLICATION ONLY AND MUST NOT BE LOANED
SYNDICATED OR USED FOR ADVERTISING PURPOSES
WITHOUT WRITTEN PERMISSION FROM US.



ACME TELEPHOTO NEW YORK BUREAU ACME TELEPHOTO
THE ROAD BACK TO MANILA

WASHINGTON, D.C.—THIS GI PHOTOGRAPHED IN TARLAC,
LUZON, LOOKS AT A SIGN INDICATING THE DIRECTION
TO MANILA. ONE OF THE BUILDINGS, BURNED BY THE
RETREATING JAPS, CAN BE SEEN IN THE BACKGROUND.

(CREDIT) SIGNAL CORPS PHOTO FROM
ACME TELEPHOTO DF 2/2/45



FILE NUMBER: 59525

RELEASED: Jan. 25, 1945

POWER IN PROCESSION--Mighty battleships of the Seventh Fleet move in formation into Lingayen Gulf as they head for 'battle stations' in the obliterating fusillade which preceded the landing of U.S. forces on Luzon.

WATCH YOUR CREDIT

OFFICIAL U. S. NAVY PHOTOGRAPH

The Navy Department has no objection to the use of this photograph in commercial advertisements, provided copy and layout are submitted for review prior to publication to the REVIEW SECTION, OFFICE OF PUBLIC RELATIONS, NAVY DEPARTMENT, WASHINGTON, D. C., or to a District Public Relations Office. However, it has no power to waive the privacy rights of the personnel portrayed.



W 757343.

SUICIDE IS BEST WAY OUT
 PACIFIC--BLACK SMOKE AND FLAMING OIL ARE
 ALL THAT REMAIN OF A JAP FRANCES TWIN
 ENGINE BOMBER WHICH LITERALLY COMMITTED
 SUICIDE IN ATTEMPT TO CRASH DIVE ON DECK
 OF AN ESCORT CARRIER. JAPS HAVE EMPLOYED
 AIRCRAFT IN SUICIDAL ATTACKS UPON OUR
 FORCES IN THE WESTERN PACIFIC FOR MONTHS.
 THE ENEMY HAS LOST A GREAT MANY PLANES AND
 A LARGE NUMBER OF ITS VOLUNTEER PILOT GROUP,
 "KAMIKAZE CORPS," WITH NEGLIGIBLE RESULTS.
 A BATTLESHIP CAN BE SEEN IN ABOVE PHOTO AT
 LEFT BACKGROUND. ANOTHER CVE IS IN RIGHT
 BACKGROUND.
 BU DJH 383
 CREDIT(U.S.)

NAVY PHOTO FROM ACME 4-20



FILE NUMBER: 308048

FILED: May 10, 1945

ONE GOLIATH LOOKS AT ANOTHER--An IOWA class battleship with upswept bow, massive superstructure steams alongside another of its class, from which this photograph was taken.

ACME NEWSPICTURES, Inc.
401 EIGHTH AVE.
NEW YORK CITY
THIS PHOTO IS SOLD TO YOU FOR YOUR
PLEASE CREDIT "Acme Photo"
AND MUST NOT BE LOANED
OR USED FOR ADVERTISING PURPOSES
WITHOUT WRITTEN PERMISSION FROM US.

WATCH YOUR CREDIT

"OFFICIAL U.S. NAVY PHOTOGRAPH"

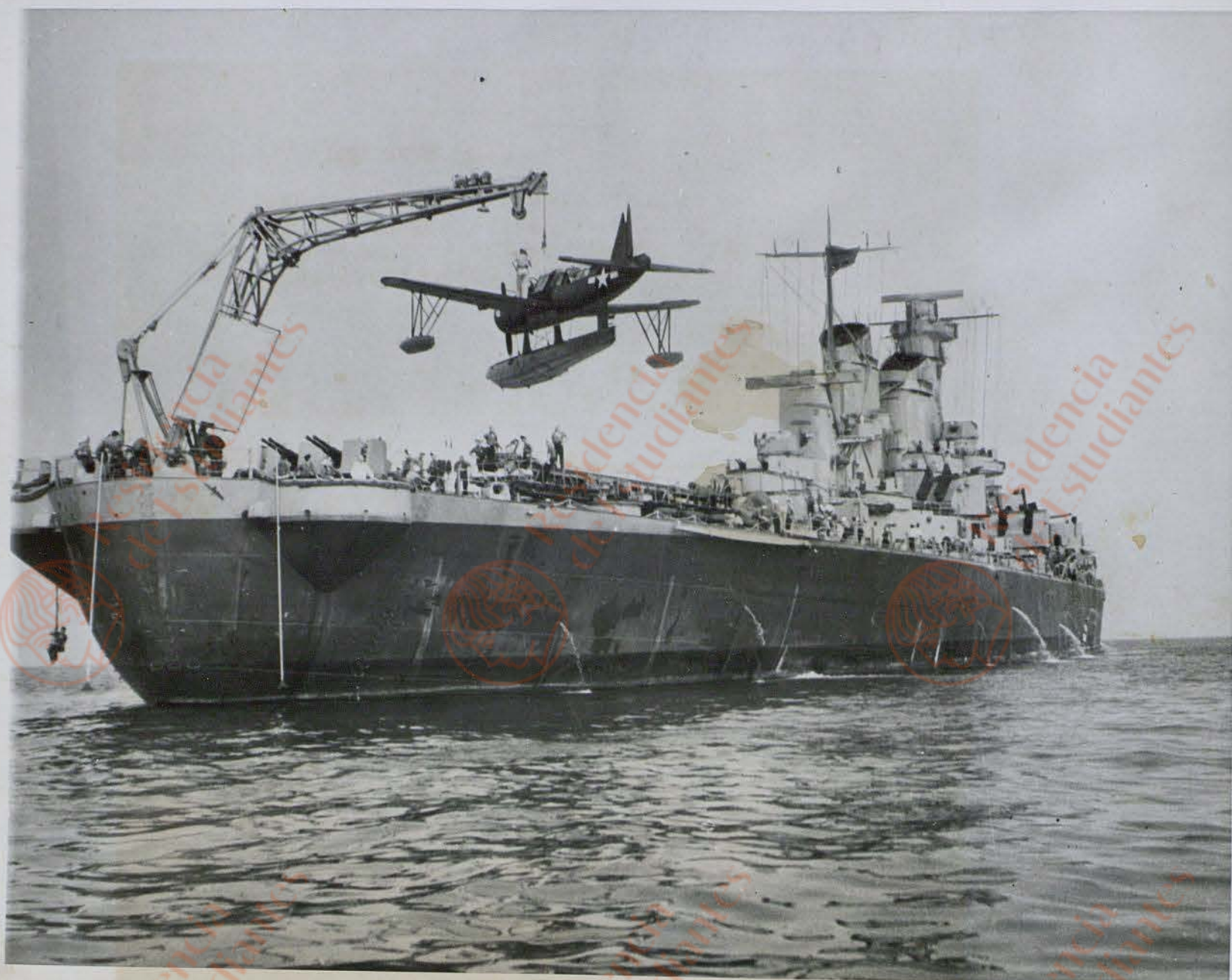
The Navy Department has no objection to the use of this photograph in commercial advertisements, provided copy and layout are submitted for review prior to publication to the REVIEW SECTION, OFFICE OF PUBLIC RELATIONS, NAVY DEPARTMENT, WASHINGTON, D.C., or to a District Public Relations Office. However, it has no power to waive the privacy rights of the personnel portrayed.

1

50

A K

308048



22080 C
ASSOCIATED PRESS PHOTO FROM NEW YORK
CAUTION: USE CREDIT

(EDS: ADVANCE TO PMS OF THURSDAY, OCTOBER 26)

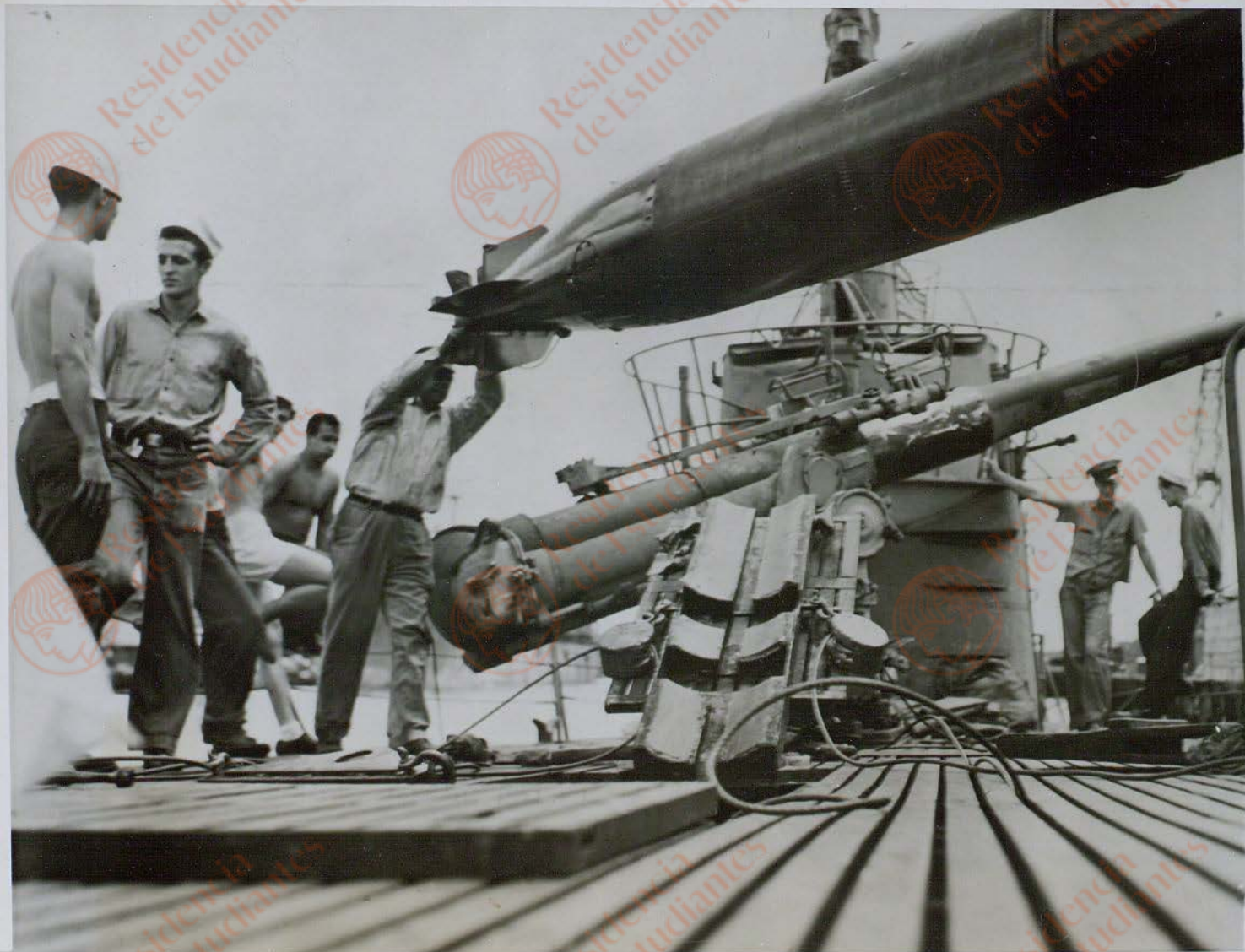
PLANE HOISTED ON BOARD BATTLESHIP WISCONSIN

A CRANE HOISTS A SEAPLANE BACK TO
ITS PLACE ON THE STERN OF THE BATTLESHIP
WISCONSIN. THE CATAPULT WHICH LAUNCHES
THE PLANE CAN BE SEEN ON THE DECK.

(CAUTION: WATCH RELEASE. TO PM PAPERS
OF THURSDAY, OCTOBER 26.)

ASSOCIATED PRESS PHOTO
JG 420PEW 10-22-44 L-DK 138
WA PA LON MEX BAIRE
NY-AX-CX-DN-KX-FX MATS FLS

(TMC NSWK OUT)



SF 34673 (SAN FRANCISCO BUREAU)

ONE WAY TICKET TO DAVY JONES

PEARL HARBOR, T.H. - READY FOR ANOTHER PATROL, THIS PACIFIC FLEET SUBMARINE HOISTS ITS LAST TORPEDO ABOARD AT PEARL HARBOR NAVY YARD BEFORE HEADING OUT TO JAPANESE WATERS WITH ITS SILENT MISSILES OF DEATH. U.S. NAVY PHOTO.

LIST 38 T

CREDIT LINE (ACME)

6-1-45



4440

FROM:
PUBLIC RELATIONS DIVISION
U.S. COAST GUARD
WASHINGTON, D.C.

OFFICIAL COAST GUARD PHOTO

COAST GUARD ROCKET-JET MERCY PLANE

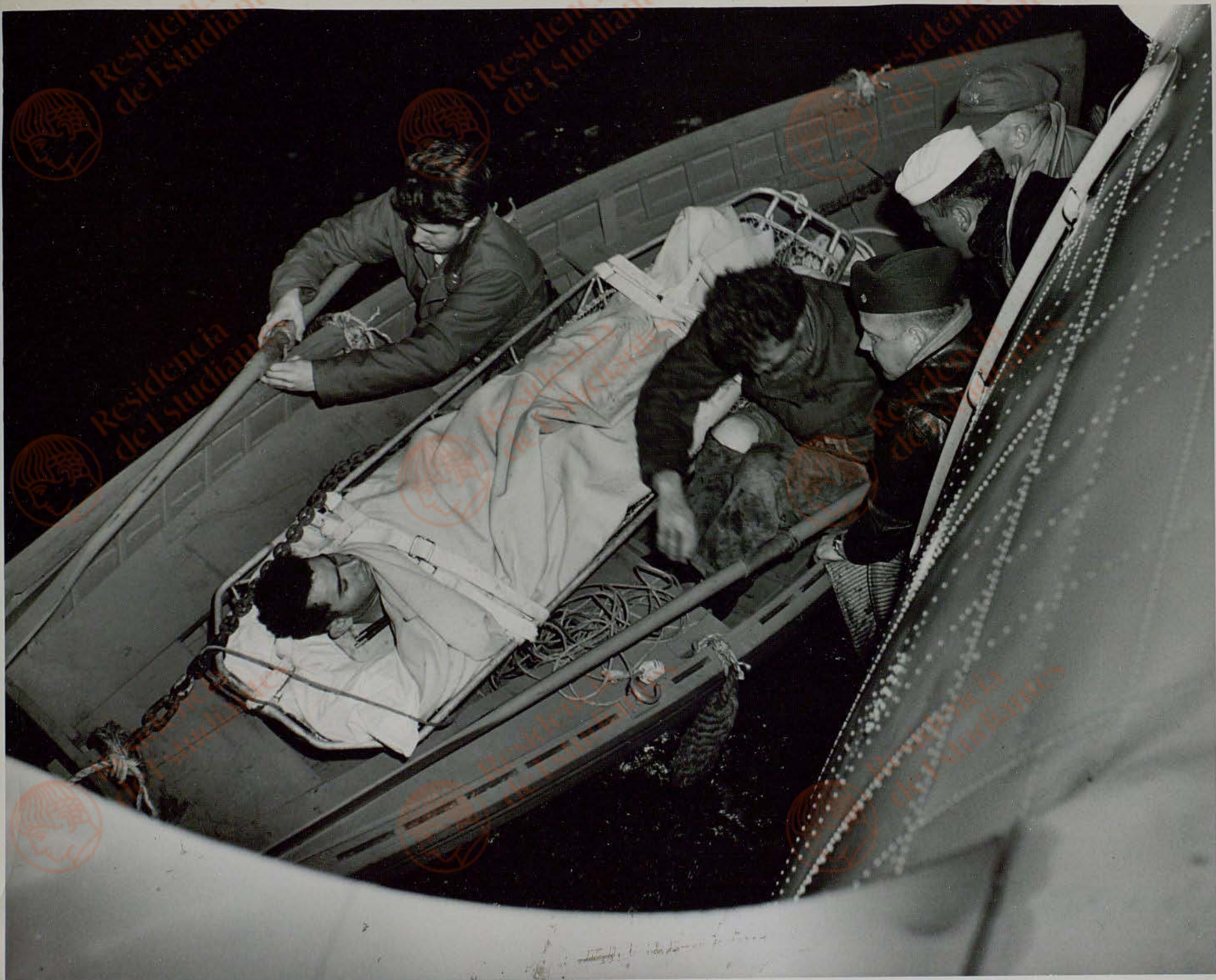
LANDS IN CHOPPY SEA TO AID STRICKEN SAILOR

(NO. 1 IN SERIES OF 3)

PONTOON CONTACT--LANDING AT DUSK IN A CHOPPY SEA OUT IN THE PACIFIC, A COAST GUARD AIR-SEA RESCUE SEAPLANE, USING ROCKET-JETS, PICKS UP A SAILOR, SERIOUSLY STRICKEN WITH APPENDICITIS, AND FLIES HIM BACK TO A HOSPITAL IN THE NICK OF TIME. HERE, THE BIG PBM'S PONTOON HITS THE SEA AFTER A TWO-HOUR FLIGHT FROM SAN DIEGO AIR BASE TO THE NAVY LANDING CRAFT SHOWN IN BACKGROUND. COAST GUARD COMDR. DONALD B. MACDIARMID, OF SAN DIEGO, CALIF., PILOTED THE SHIP ON THE MERCY FLIGHT.

IN REWRITING CAPTION PLEASE MENTION "COAST GUARD."

THIS PHOTO WAS PREVIOUSLY RELEASED
IN THE 11TH NAVAL DISTRICT.



4439

FROM:

PUBLIC RELATIONS DIVISION
U.S. COAST GUARD
WASHINGTON, D.C.

OFFICIAL COAST GUARD PHOTO

COAST GUARD ROCKET-JET MERCY PLANE

LANDS IN CHOPPY SEA TO AID STRICKEN SAILOR

(NO. 3 IN SERIES OF 3)

THEY CAME IN TIME--STRICKEN WITH ACUTE APPENDICITIS, NAVY
MACHINIST'S MATE THIRD CLASS PAUL R. OLDAKER LIES IN A LITTER,
ABOUT TO BE HOISTED FROM A DORY TO A COAST GUARD AIR-SEA
RESCUE SEAPLANE WHICH FLEW OUT INTO THE PACIFIC FROM SAN DIEGO,
CALIF., AIR STATION IN RESPONSE TO AN APPEAL FOR IMMEDIATE
ASSISTANCE FROM A NAVY LANDING CRAFT. THE PATIENT WAS FLOWN TO
LAND AND HOSPITALIZATION IN THE NICK OF TIME. MANNING THE
DORY ARE HERMAN CHEW, NAVY PHARMACIST'S MATE SECOND CLASS,
OF ATLANTIC CITY, N.J., AND TEX BABB, COXSWAIN, OF DALLAS,
TEXAS. LEANING OUT OF THE COAST GUARD PBM TO ASSIST THEM ARE:
DR. WILLIAM S. BAUM, FLIGHT SURGEON, U.S. PUBLIC HEALTH SERVICE,
OF KENT, CONN.; CARL KISSEL, AVIATION MACHINIST'S MATE SECOND
CLASS, OF 5808 SARANAC AVENUE, CINCINNATI, OHIO; AND COAST
GUARD COMDR. DONALD B. MACDIARMID, PILOT AND SAN DIEGO AIR
STATION COMMANDING OFFICER, OF SAN DIEGO. OLDAKER'S HOME IS
AT 3200 SHORE DRIVE, NORFOLK, VA.

THIS PHOTO WAS PREVIOUSLY
RELEASED IN THE 11TH
NAVAL DISTRICT.



44/1

FROM: PUBLIC RELATIONS DIVISION
U.S. COAST GUARD
WASHINGTON, D.C.

OFFICIAL COAST GUARD PHOTO

COAST GUARD ROCKET-JET MERCY PLANE

LANDS IN CHOPPY SEA TO AID STRICKEN SAILOR

(NO. 2 IN SERIES OF 3)

DORY COMES ALONGSIDE--FROM A NAVY LANDING CRAFT, A TINY DORY IS ROWED ALONGSIDE A COAST GUARD AIR-SEA RESCUE SEAPLANE WHICH FLEW OUT FROM SAN DIEGO, CALIF., AIR STATION IN RESPONSE TO AN URGENT CALL FOR AID FOR A SAILOR STRICKEN WITH ACUTE APPENDICITIS. THE DORY BRINGS THE PATIENT, PAUL R. OLDAKER, 23, MACHINIST'S MATE THIRD CLASS, OF 3200 SHORE DRIVE, NORFOLK, VA., FOR TRANSFER TO THE PBM AND FLIGHT TO LAND AND A HOSPITAL. THE COAST GUARD SEAPLANE, ROCKET-JET PROPELLED, MADE THE SEA LANDING EARLY IN THE EVENING.

IN REWRITING CAPTION PLEASE MENTION "COAST GUARD."

THIS PHOTO WAS PREVIOUSLY
RELEASED IN THE 11TH
NAVAL DISTRICT.