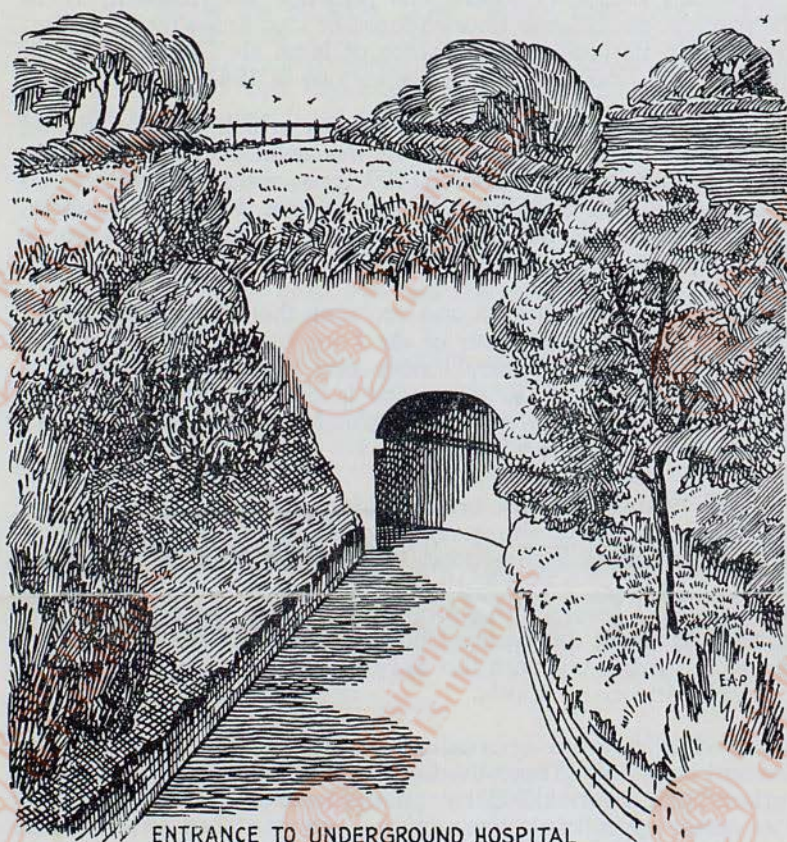


# The German Military Underground Hospital and the German Occupation Museum

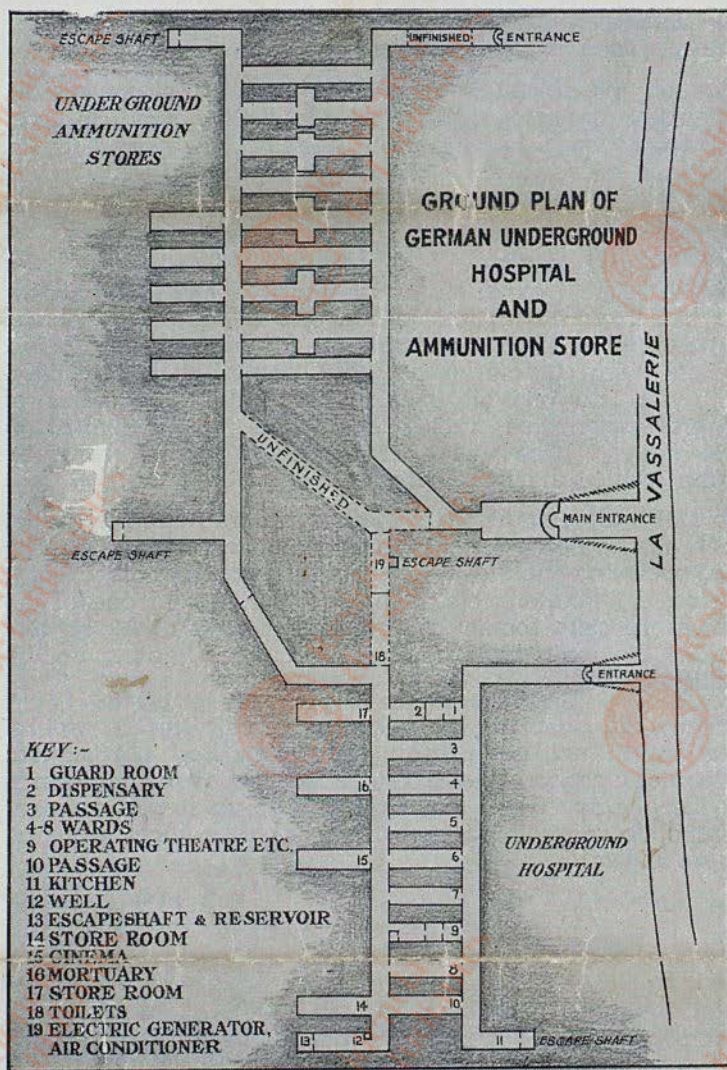
LA VASSALERIE.  
ST. ANDREW'S,  
GUERNSEY.

(First opened to the public on July 29th, 1954)



ENTRANCE TO UNDERGROUND HOSPITAL

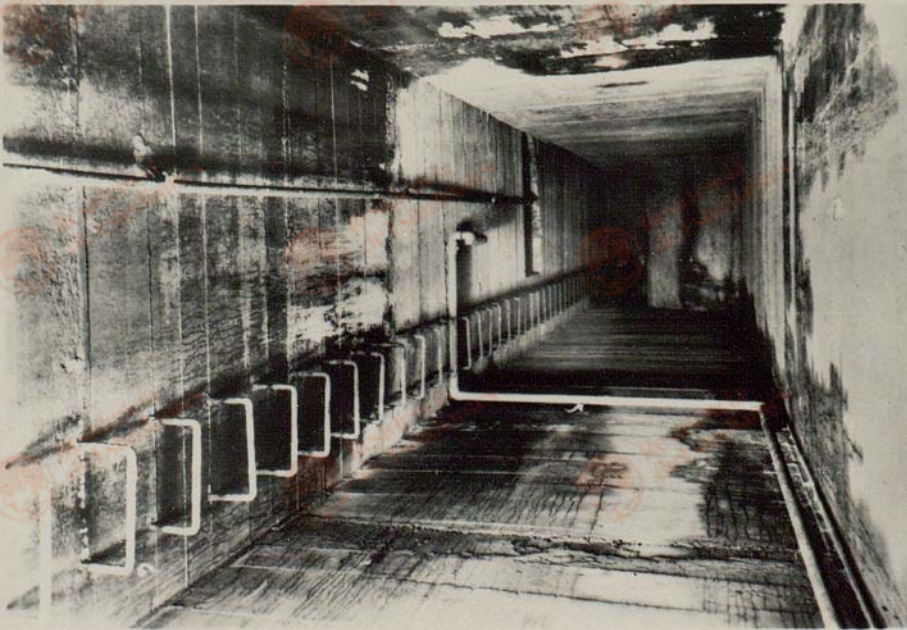
Press Typ.



The numbers on this plan do not necessarily correspond with the arrow and number system in the tunnels.



ESCAPE SHAFT  
GERMAN UNDERGROUND HOSPITAL  
GUERNSEY



HOHLGANG 40

# LAZARETT

SURFACE PLAN OF GERMAN UNDERGROUND HOSPITAL  
GUERNSEY.



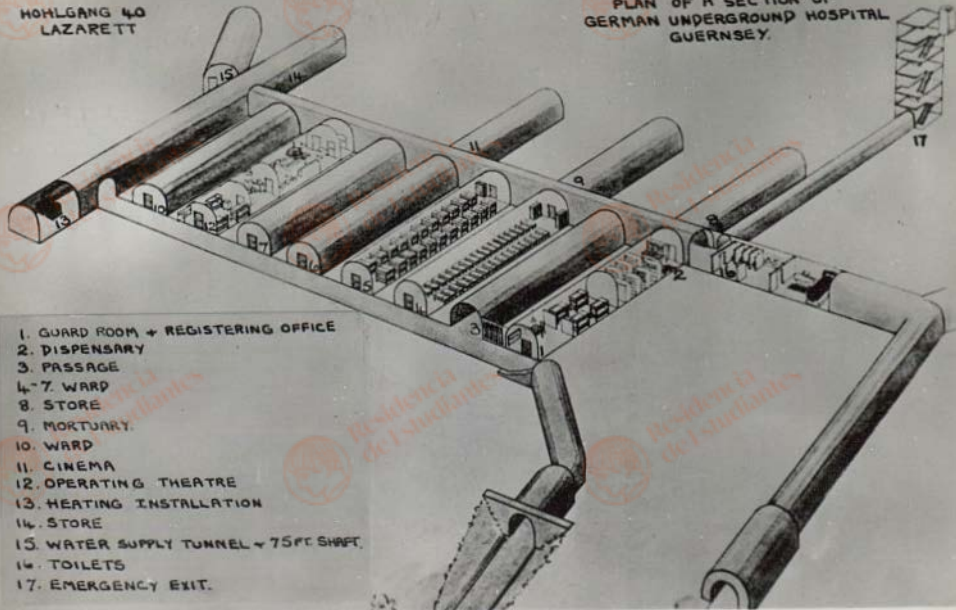
UNFINISHED ENTRANCE  
GERMAN UNDERGROUND HOSPITAL  
GUERNSEY.



MOHLGANG 40  
LAZARETT

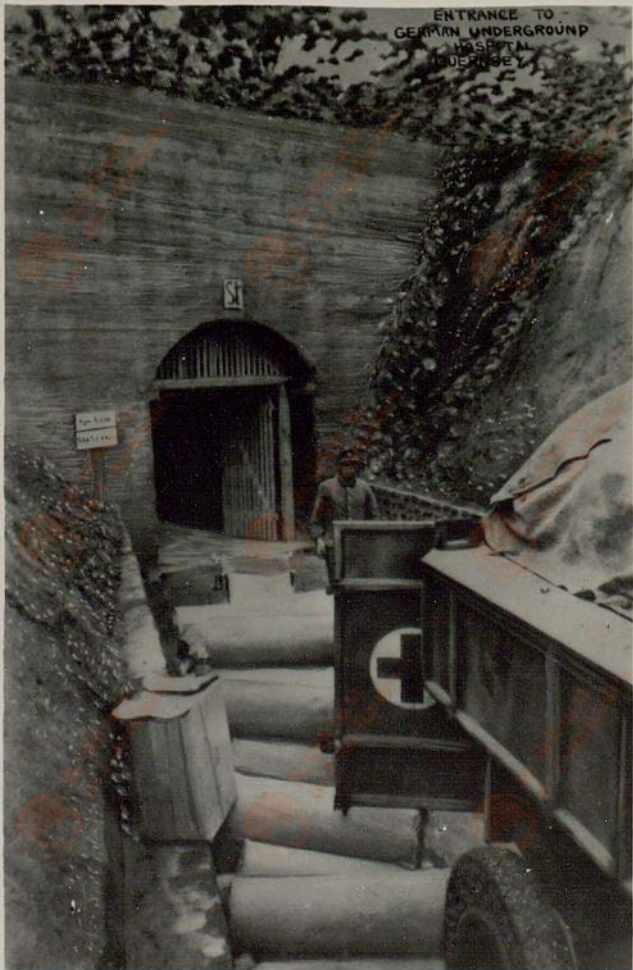
PLAN OF A SECTION OF  
GERMAN UNDERGROUND HOSPITAL  
GUERNSEY.

1. GUARD ROOM + REGISTERING OFFICE
2. DISPENSARY
3. PASSAGE
- 4-7. WARD
8. STORE
9. MORTUARY.
10. WARD
11. CINEMA
12. OPERATING THEATRE
13. HEATING INSTALLATION
14. STORE
15. WATER SUPPLY TUNNEL + 75 FT SHAFT.
16. TOILETS
17. EMERGENCY EXIT.





ENTRANCE TO  
GERMAN UNDERGROUND  
HOSPITAL  
QUERNBERG





A CORRIDOR OF  
THE GERMAN UNDERGROUND HOSPITAL  
GUERNSEY



GERMAN UNDERGROUND HOSPITAL WARD.  
GUERNSEY.

